



BEN
SHAFFER
RECREATION

2019

RECREATION SURFACES

CATALOG



WoodCarpet®
ENGINEERED WOOD FIBER



RecBase®
UNITARY SURFACES



TuffMat®
RESILIENT WEAR MATS

**BETTER.
NATURALLY.**



CONTENTS

03 ZEAGER story

04 Testing & Certification

06 WoodCarpet®

Bonded 2	8
Bonded Ramps	9
Bonded 1	10

12 RecBase®

Synthetic Grass › Nylon	12
Synthetic Grass › Polyethylene	14
Indoor Carpet	16

18 TuffMat®

Zero-Fill™ Mats	18
Surface Mats	19



ZEAGER developed the original Engineered Wood Fiber (EWF) product and was the first to produce it for recreation surfacing applications throughout North & Central America.

For Playgrounds & Play Areas

EWF is clean and fresh processed wood ground to a fibrous consistency and randomly-sized. It is not chemically treated and is entirely natural. When it is spread and compacted, it forms a knitted layer that is firm and stable. It maintains its cushiony properties for the life of the playground, provided the depth is maintained by occasional top-offs. EWF is pervious and does not decompose as quickly as mulch.



For Trails, Pathways & Gathering Areas

Bonded EWF is the same processed material that is then mixed with specially-formulated binders on site, poured and tamped into place. It has become a highly desirable trail surface for parks, natural areas, historic sites and campgrounds because of its appearance and ease of mobility for wheelchairs and walkers who benefit from a solid surface under foot. Bonded EWF is replacing asphalt in many places because it encourages more people to explore nature.



The ZEAGER story is written in engineered wood fiber.

Innovation leads the way » The ZEAGER story is one of firsts. We developed the original EWF product and were first to manufacture EWF for surfacing applications. We also pioneered accessibility standards that are now common in the industry and helped to establish certification benchmarks for the International Play Equipment Manufacturers Association (IPEMA). We also worked with the USDA Forest Products Research Lab to develop “stabilized” EWF to further improve accessibility to play and recreational areas.

Customer commitment runs in the family » Our story is rooted in family. ZEAGER is a third-generation, family-owned and -operated business with zero outside equity ownership. We’re influenced only by the needs of you, our customers, and driven daily to exceed your expectations for superior products and service. Today, four ZEAGER family members manage the company that Paul Zeager started in a sawmill in southcentral Pennsylvania.



Experience makes all the difference » At ZEAGER, our story is also about growing and harvesting timber, as well as processing, coloring, storing, installing, inspecting and testing it. Sourcing and controlling our own wood means that we can identify and resolve potential issues early, deliver a higher-quality, more consistent product, and reliably satisfy our customers throughout the country.

Keeping it local » Over the years, we’ve built long-lasting relationships with producers across the country and watched with pride as production of ZEAGER products became a major part of their operations. This is a key chapter in our story. Through this large, North American network we’ve been able to keep production “local,” rapidly responding to customer needs and creating good jobs.

ZEAGER TESTING

Helping you manage risk & maintain compliance.

ZEAGER technicians are trained and insured to perform testing — of engineered wood fiber, rubber, turf — per ASTM standard test methods. We provide the necessary documentation of results that you can use to validate your surface's safety, and/or we identify problem areas that are potential hazards that should be addressed.

Many testing bodies review surfacing materials in a lab, where the controlled environment doesn't accurately represent — and therefore can't be a factor in — conditions like weather, lack of drainage or installation problems. As an example, UV light and rain can dramatically affect the surface material.

ZEAGER testing goes far beyond ASTM standards in two essential ways:

- 1 | We come to your playground with our test equipment and perform testing in real conditions.
- 2 | We test the surfacing system as a whole and factor the performance of not only the surface's impact attenuation and accessibility characteristics, but also how well the system drains for maintaining a resilient surface in all temperatures, the performance and integrity of other surface accessories like wear mats in high-use areas (if they exist) and if these accessories are installed properly for safety and accessibility performance.



IMPACT ATTENUATION

- Using ASTM-recognized testing equipment
- Testing can be performed in any season
- Testing performed at your sites
- Confidential written results

SURFACE ACCESSIBILITY

- Firmness and stability
- Slope, cross-slope and changes in level
- Accessible routes and maneuvering spaces
- Testing performed at your sites

We do a full range of testing to ensure our surfaces are above what's considered safe & acceptable.



1 We submit to IPEMA for conducting its lab testing for ASTM F1292 and F2075.

2 ZEAGER goes beyond IPEMA's focus on lab-tested fall protection by testing in the field for accessibility and to more stringent standards.

Some products don't even use the IPEMA certification program. ZEAGER does! We back many of our systems with the trust of IPEMA's certification for ASTM F1292 and F2075 compliance. And then our additional testing provides the "above & beyond" assurances that your play surface is high-performing and comes with value-added benefits like follow-up testing, installation support for optimal performance, and surface-maintenance guidance for long-life and warranty compliance.

We're committed to a certification program that far exceeds any other third-party standard.



ZEAGER CERTIFIED

More Comprehensive Certification for Greater Results



Meets ASTM F1292 impact test criteria: 200 Gmax / 1000HIC	✓	✓
Meets ASTM F2075 engineered wood fiber criteria for sieve, tramp & hazardous metals	✓	✓
Meets ASTM F1951 lab test for firmness & stability	✓	
Impact test results at least 20% better than criteria limits per ASTM F1292	✓	
Field tested per ASTM F1292 at 120°F, 70°F & 25°F temperatures	✓	
Field tested for firmness & stability	✓	
Manufacturer-provided installation & maintenance guide booklet	✓	
Backed by over 10 million dollars in liability insurance.	✓	
Discount on impact testing of your surface after installation	✓	
Performance improving, maintenance reducing services & products.	✓	

WoodCarpet®

ENGINEERED WOOD FIBER



**100% NATURAL.
PERVIOUS. SAFE.
AFFORDABLE.**



► WoodCarpet®

The most cost-efficient safety surface for playgrounds.

ZEAGER WoodCarpet is made from fresh-grade wood and contains no waste wood such as pallets that could contain nails, spilled chemicals, paint or wood preservatives. It's processed to high-quality requirements using rigid production standards. WoodCarpet is naturally pervious and its installation specification ensures that critical fall protection exceeds safety standards. It provides ADA compliance for access and blends in with nature *because it is nature*.

- Excellent traction & grip characteristics
- Deep shock absorption for safer play
- Fast drainage to avoid water pooling
- Environmentally-safe, non-toxic

ZEAGER WoodCarpet® » Engineered Wood Fiber

- Material:** 100% fresh-grade wood fiber composition (no chemical treatments or additives)
- Source:** Extracted, processed & manufactured within installation's region
- Impact Rating:** IPEMA certified for 12' (with 12" EWF)
- Accessibility:** ADA compliant (with proper installation & maintenance)
- Sub-Base:** Soil or sand
- Maintenance:** Raking & occasional topping off
- Warranty:** Meets ASTM F1292 for 15 years (must be installed & maintained per ZEAGER specification)



To verify product certification, visit www.ipema.org



Include **ZEAGER Resilient/Drainage Pad** panels under WoodCarpet for excellent vertical and horizontal drainage, critical fall protection and increased surfacing longevity. They also eliminate the need for — and expense of — drainage gravel and the excavation required for drainage gravel.



To verify product certification, visit www.ipema.org



ZEAGER WoodCarpet® » Resilient/Drainage Pad

- Material:** 100% thermally-fused, closed-cell polyethylene foam & geotextile fabric liner
- Impact Rating:** IPEMA certified for 12' with 10" EWF over pad
- Sub-Base:** Soil, sand or asphalt (asphalt requires 12" of WoodCarpet and WoodCarpet mats)
- Maintenance:** Raking & occasional topping off of the WoodCarpet
- Warranty:** WoodCarpet with pad meets ASTM F1292 for 20 years (must be installed & maintained per ZEAGER specification)



Easily place 4' x 6' foam panels over sub-base before installing top surface.

► See pages 18–19 for including TuffMat® Resilient Wear Mats for your playground.

WoodCarpet®

ENGINEERED WOOD FIBER



**100% NATURAL.
PERVIOUS.
MORE ACCESSIBLE.
LOWER MAINTENANCE.**



► WoodCarpet® Bonded 2

The ultimate pervious surface for accessibility and low maintenance.

Make your play area more accessible with this top layer of specially-formulated binder and engineered wood fiber spread and tamped over a carefully compacted ZEAGER WoodCarpet base. The bonded material forms pathways within the existing WoodCarpet surface to significantly improve playground accessibility and reduce maintenance.

- Great for pathways in existing playgrounds
- Improve playground accessibility
- Reduce overall maintenance
- Easily added to existing playgrounds

ZEAGER WoodCarpet® » Bonded 2 Engineered Wood Fiber

- Material:** Combination of 100% fresh-grade wood fiber & specially formulated binder
- Source:** (EWF) extracted, processed & manufactured within installation's region
- Impact Rating:** Rated for 8' (with 8" EWF) & 10' (with 12" EWF)
- Accessibility:** ADA compliant
- Sub-Base:** Soil or sand
- Installation:** ZEAGER-Certified installer required
- Maintenance:** Bonded top surface needs no raking or topping off, clear-coating is recommended
- Warranty:** Meets ASTM F1292 for 3 years (must be installed & maintained per ZEAGER specification)



To verify product certification, visit www.ipema.org



Include **WoodCarpet® Bonded Ramps** for transitions from the playground perimeter to play surface.



ZEAGER WoodCarpet® » Bonded Ramps

- Material:** (Top) Combination of 100% fresh-grade colored wood fiber & specially formulated binder
(Base) 3-piece polyethylene foam ramp at 8% slope
- Size:** 48" square piece with left & right 24" x 48" winged pieces
- Accessibility:** ADA compliant
- Installation:** Foam ramp base attached to concrete curbing, coat ramp (and cover brackets) with WoodCarpet® Bonded material



WoodCarpet®
Bonded Ramp

► See pages 18–19 for including TuffMat® Resilient Wear Mats for your playground.

WoodCarpet®

ENGINEERED WOOD FIBER



**PERVIOUS. ACCESSIBLE.
NATURAL LOOKING.
LOW MAINTENANCE.**



**FIRM & STABLE
SURFACE**

► WoodCarpet® Bonded 1

Nature's best pervious pathway & gathering place surface that's easy to walk on and maneuver mobility devices.

Get rid of uneven and eroding trails, paths and gathering areas that turn into muddy messes during rain. And get people off asphalt or concrete surfaces when they're supposed to be among nature. ZEAGER WoodCarpet Bonded 1 is a cost-efficient and eco-friendly solution for providing accessible opportunities to enjoy parks and natural settings. The engineered wood fibers are bonded together to form a firm and stable surface that can be spread to form any configuration.

ZEAGER WoodCarpet® » Bonded 1 Engineered Wood Fiber

Material:	Combination of 100% fresh-grade wood fiber & specially formulated binder
Source:	(EWF) extracted, processed & manufactured within installation's region
Accessibility:	ADA compliant
Sub-Base:	Gravel
Installation:	ZEAGER-Certified installer required
Maintenance:	Topcoat to extend life
Warranty:	1-year manufacturer warranty (must be installed & maintained per ZEAGER specification)



To verify product certification, visit www.ipema.org



Just a few of the many ways you can utilize
WoodCarpet® Bonded 1.

- Walkways
- Nature trails
- Slopes
- Patios/gathering areas
- Outdoor theaters
- Golf cart paths
- Picnic areas
- Playground access

RecBase®

UNITARY SURFACES



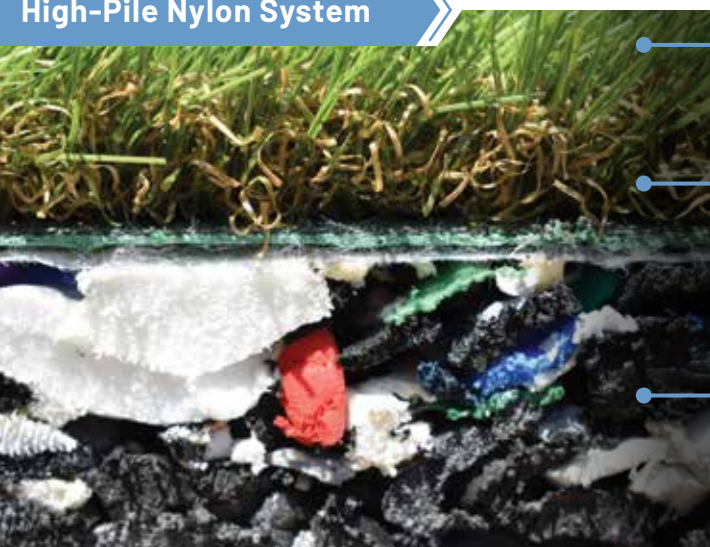
► RecBase® Synthetic Grass » Nylon

A natural-looking, safe & super durable play surface with no messy infill.

ZEAGER RecBase Synthetic Grass is available in two pile heights — rolled out over RecBase Resilient/Drainage Pad for critical fall protection. Both have excellent wearability, abrasion resistance and resilience. The special thatch-fiber root zone in our high-pile systems holds fibers upright and in place under heavy use, eliminating the need for messy infill. The pervious system can be used outdoors or indoors. Cleanup is a snap with a vacuum cleaner, leaf blower or water hose.

**NO MESSY INFILL.
LOW MAINTENANCE.
SUPERIOR DURABILITY.**

High-Pile Nylon System



Nylon Fibers

Nylon Thatch

Resilient/
Drainage Pad

ZEAGER RecBase® Synthetic Grass » High-Pile Nylon

- Material:** (Grass) Nylon fibers with polyurethane backing;
(Pad) 100% thermally-fused, closed-cell polyethylene foam & geotextile fabric liner
- Size:** (Grass) 1-1/4" pile height by 15' width and custom length
(Pad) 1", 2" & 3" thicknesses by 48"x 72"
- Impact Rating:** IPEMA certified for 8' (3" pad)
- Accessibility:** ADA compliant
- Sub-Base:** Gravel (3" required for IPEMA rating)
- Installation:** ZEAGER-Certified installer required
- Warranty:** Meets ASTM F1292 for 5 years, 8-year product warranty



To verify product certification, visit www.ipema.org



Low-Pile Nylon System



Nylon Fibers

Resilient/
Drainage Pad

ZEAGER RecBase® Synthetic Grass » Low-Pile Nylon

- Material:** (Grass) Nylon fibers with polyurethane backing;
(Pad) 100% thermally-fused, closed-cell polyethylene foam & geotextile fabric liner
- Size:** (Grass) 3/4" pile height by 15' width and custom length
(Pad) 1", 2" & 3" thicknesses by 48" x 72"
- Impact Rating:** IPEMA certified for 6' (2" pad) & 4' (1" pad)
- Accessibility:** ADA compliant
- Sub-Base:** Gravel (3" required for IPEMA rating)
- Installation:** ZEAGER-Certified installer required
- Warranty:** Meets ASTM F1292 for 5 years, 8-year product warranty



To verify product certification, visit www.ipema.org

RecBase®

UNITARY SURFACES



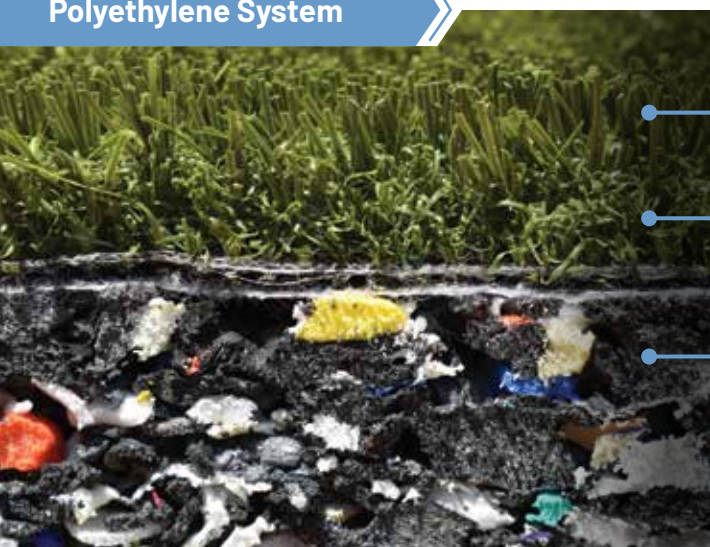
**NO MESSY INFILL.
LOW MAINTENANCE.
VERY SOFT.**

► RecBase® Synthetic Grass » Polyethylene

A soft & safe synthetic turf surface for general purpose play – for kids & dogs.

ZEAGER RecBase Synthetic Grass now has two polyethylene choices: one with an adhered cushion foam, and one that is rolled over a resilient/drainage pad. Both systems feature polyethylene upright fibers with nylon-thatch root zone — eliminating the need for messy infill. Both pervious systems have excellent wearability, abrasion resistance and resilience. Our newest synthetic grass system is engineered for general purpose play applications and dog parks!

Polyethylene System



Polyethylene Fibers

Polypropylene Thatch

Resilient/
Drainage Pad

ZEAGER RecBase® Synthetic Grass » General Purpose & Dog Park

Material:	(Grass)	Polyethylene fibers with a polypropylene thatch
	(Pad)	100% thermally-fused, closed-cell polyethylene foam & geotextile fabric liner
Size:	(Grass)	1" pile height by 15' width and custom length
	(Pad)	1", 2" & 3" thicknesses by 48" x 72"
Impact Rating:	IPEMA certified for 8' (3" pad)	
Accessibility:	ADA compliant	
Sub-Base:	Gravel (3" required for IPEMA rating)	
Installation:	ZEAGER-Certified installer required	
Warranty:	Meets ASTM F1292 for 5 years, 7-year product warranty	



To verify product certification, visit www.ipema.org



Polyethylene Colored System



Polyethylene
Grass

Nylon Thatch

Adhered
Cushion

ZEAGER RecBase® Synthetic Grass » Polyethylene

- Material:** Polyethylene fibers with a nylon thatch adhered to a 5mm biocel polyurethane cushion pad
- Size:** 1" pile height & 5mm cushion by 15' width and custom length
- Impact Rating:** IPEMA certified for 6' (2" pad)
- Accessibility:** ADA compliant
- Sub-Base:** Concrete or asphalt
- Installation:** ZEAGER-Certified installer required
- Warranty:** Meets ASTM F1292 for 5 years, 7-year product warranty



To verify product certification,
visit www.ipema.org

RecBase®

UNITARY SURFACES



**SAFE. DURABLE.
COMFORTABLE.
AFFORDABLE.**



Royal Blue carpet over
.75" resilient pad.

► RecBase® Indoor Carpet

**Get the needed durability and safety
with the comfort of a carpet surface.**

ZEAGER RecBase® Indoor Carpet is a very durable, low-maintenance and reasonably priced safety carpet for indoor play areas. When rolled out over RecBase Resilient Pad, it provides fall protection. It comes in a variety of colors, cleans easily and maintains its look for years under heavy use.

EXCELLENT FOR:

- | | | |
|---------------------------|-------------------|-------------------|
| ■ Schools | ■ Medical offices | ✓ Hypoallergenic |
| ■ Day care centers | ■ Retail stores | ✓ Stain resistant |
| ■ Recreational facilities | ■ Fitness centers | ✓ Easy to clean |

ZEAGER RecBase® Indoor Carpet

- | | |
|-----------------------|---|
| Material: | 100% BCF Olefin cut pile |
| Size: | 12' wide rolls |
| Impact Rating: | 2' (.75" resilient pad over hard surface) |
| Installation: | ZEAGER-Certified installer required |
| Warranty: | Meets ASTM F1292 for 3 years; 3-year prorated warranty for carpet (must be installed & maintained per ZEAGER specification) |

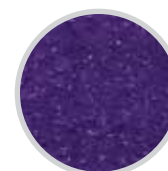




AVAILABLE COLOR OPTIONS:



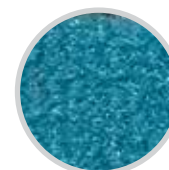
Royal Blue



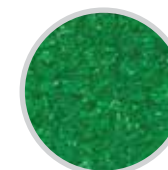
Purple



Red



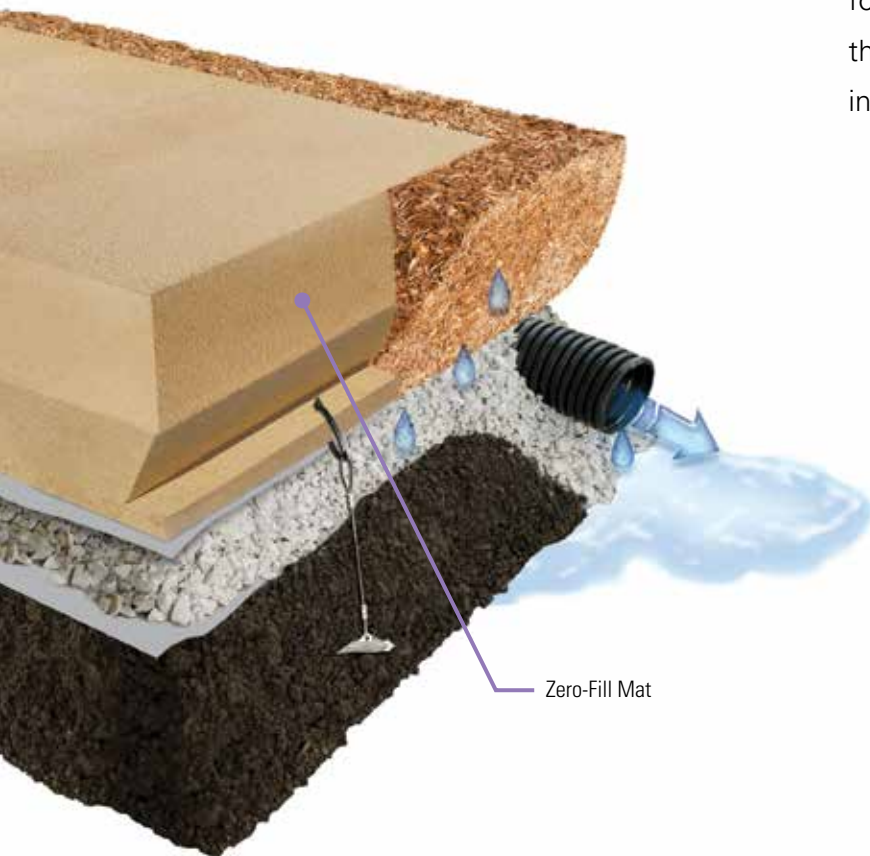
Light Blue



Green



**INSTALL IT,
AND DON'T WORRY
ABOUT IT AGAIN.**



Zero-Fill Mat

► TuffMat® Resilient Wear Mats

No more unsightly holes, messy puddles or costly maintenance headaches.

Any wood fiber “kicks out” during normal use, and it’s usually at those places where high traffic occurs and impact attenuation is needed most: under and at entrance and exit points of play equipment. Eliminate that problem by installing ZEAGER TuffMat® Resilient Wear Mats. The Surface Mat’s beveled edges, unique concave shape and fastening mechanism keep the mat in place and WoodCarpet underneath for required safety ratings and ADA compliance. Our new Zero-Fill™ Mats provide the impact absorption needed, and require zero fill under or above the mat, resulting in no maintenance.

ZEAGER TuffMat® Resilient Wear » Zero-Fill™ Mats

- Material:** Various types of heavy-duty foam
- Size:**
 - 42" x 60" x 11" universal (surface area 30" x 48")
 - 60" x 102" x 11" swing bay (surface area 48" x 90")
 - 84" x 84" x 11" spinner or tire swing (surface area 72" x 72")
- Impact Rating:** Rated for 8'
- Accessibility:** ADA compliant
- Warranty:** 5-year warranty (must be installed & maintained per ZEAGER specification)



To verify product certification,
visit www.ipema.org

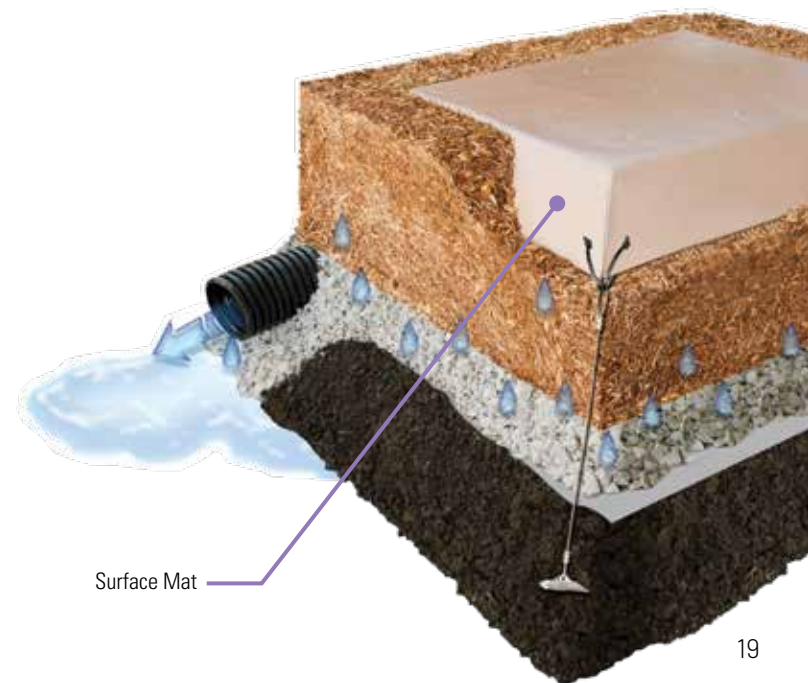


ZEAGER TuffMat® Resilient Wear » Surface Mats

- Material:** Heavy-duty vinyl top over 1" recycled polyethylene foam base
- Impact Rating:** IPEMA certified for 12' (1" mat over 11" EWF)
- Accessibility:** ADA compliant
- Warranty:** 5-year warranty (must be installed & maintained per ZEAGER specification)
- Mat Size:**
- | | |
|--------------------------------|----------------------------|
| 32" x 32" slide | 72" x 88" swing bay |
| 32" x 62" swing | 144" x 144" merry-go-round |
| 36" x 48" universal | Custom mat sizes available |
| 72" x 72" tire swing & spinner | |



To verify product certification, visit www.ipema.org





BETTER. NATURALLY.

Engineered for safety, accessibility, easy maintenance, durability & greater value.

ZEAGER offers products for:

► RECREATION SURFACING



► EQUINE FOOTING & ANIMAL BEDDING



For more information, downloadable specs, installation & maintenance guides and more, visit zeager.com



Ask us a question or get a free quote!

(800) 346-8524 • info@zeager.com



Purchase ZEAGER products through one of these buying programs:



B E N
S H A F F E R
R E C R E A T I O N

973-663-2021

www.benshaffer.com