




ID SCULPTURE

PLAY. CLIMB. EXPLORE.

REINVENTING THE PLAYGROUND



Custom Mammoth
Suzan Nightingale McKay Memorial Park • Anchorage, AK



OUR PLAYGROUND

Home Sweet Home in the Elk Mountains of Colorado



**In our world
the impulse to play,
climb and explore does
not end with childhood.**

Our obsession with play-based learning has its roots in the mountains and is born out of a love for adventure. We are climbers, skiers, boaters, mountain bikers and hikers, who explore the natural world with our families and friends.

True to these roots, our team of talented designers and fabricators use this intimacy with the outdoors to create nature inspired play sculptures that are authentic down to the smallest detail.

WHAT WE BRING TO
EVERY PROJECT

"If you are looking for a collaborative design process with a group of creative, innovative design professionals you need to be teaming with ID Sculpture.

My clients need the assurance that play elements will be designed and constructed to meet required safety codes and built to last. IDS provides that 100%.

I need the assurance that play elements will be engaging, developmentally challenging and unique so children and families have a positive and fun experience every time they visit.

IDS has provided amazing, custom climbing walls and features as well as other specialty pieces at an affordable price for my design projects throughout the US. As a landscape architect, custom design can be one of the most difficult aspects of a project. IDS provides design-build services that take ideas from paper to reality seamlessly. **When IDS is on the team I know the project will be a success for all involved, especially the kids."**

Kerry White, RLA, ASLA, LEED TM
President - Urban Play studio

ID Sculpture is the industry leader in meeting the developmental needs of children through climbing activities. We do this by combining carefully designed physical challenges with imaginative play and a commitment to our core principals.

We believe :

- Kids thrive when they feel an authentic sense of adventure and can safely explore their limits
- That nothing fosters learning like play
- Every project is local and should reflect the spirit of its community
- Everyone should have access to play; universal design should be a part of all playgrounds
- Playgrounds should appeal to adults as much as children
- Collaboration is the cornerstone of good design
- As stewards of the environment, we have a responsibility to minimize our impact and build the most durable products possible

The symbols below indicate the age appropriateness of each component based on ASTM 1487.



The IPEMA Certified logo will be used to signify products that are IPEMA certified to ASTM F1487.



IPEMA MEMBER
INTERNATIONAL
PLAY EQUIPMENT
MANUFACTURERS
ASSOCIATION

TECHNOLOGY
ENGINEERING
HAND CRAFT

ID Sculpture combines old world sculptural techniques with modern digital technology. This gives us the power to realize virtually any theme or form.

Throughout the creative process, we use tried and true technology to make sure we're creating structures and designs that match your expectations. We use laser scanning, haptic modeling and 3D visualization to test our concepts three-dimensionally. Once a sculpture is approved, we use CNC machines to exactly replicate the design. Finally, our talented team of artists hand sculpt and finish the surface.

This method allows us to work quickly and accurately at a variety of scales while maintaining complete creative control.





PLAY

Our creations are designed to attract kids, get them moving and inspire them to come back again and again. You'll see our love of nature in our organic forms and realistic textures. You can choose a signature sculpture from our catalog, or we can help you realize your vision for a completely custom environment.

TERRA CRITTERS

Kids love climbing, but they also love animals. This product line is all about giving them both with a series of playful sculptures just the right size for clambering, climbing, or cuddling. We can even customize color and finishes to reflect local habitats and species.

Critters
Wardle Fields Regional Park • Bluffdale, UT



Snapping Turtle

model : TC030
 dimensions : 6' 9" x 4' 11" x 2"
 use zone : 18' 9" x 16' 11"
 ages : 2-5



Painted Turtle

model : TC029
 dimensions : 6' x 4' 6" x 1' 10"
 use zone : 18' x 16' 6"
 ages : 2-5



Box Turtle

model : TC028
 dimensions : 6' 2" x 4' 4" x 2' 4"
 use zone : 18' 2" x 16' 4"
 ages : 2-5



Bear Cub

model : TC001
 dimensions : 3' 10" x 7' 8" x 3' 9"
 use zone : 15' 10" x 19' 8"
 ages : 2-5



Pig

model : TC008
 dimensions : 7' 6" x 3' 2" x 3' 6"
 use zone : 19' 6" x 15' 2"
 ages : 2-5



Cow

model : TC007
 dimensions : 8' x 3' 2" x 3'
 use zone : 20' x 15' 2"
 ages : 2-5





Horntail Dragon

model : TC036
 dimensions : 6'-4" X 6'-8" X 6'-0"
 use zone : 18'-4" X 18'-8"
 ages : 5-12



Great Falls Dragon

model : TC021
 dimensions : 7'-4" x 2'-8" x 4'-2"
 use zone : 19'-4" x 14'-8"
 ages : 2-5



Tick Tock Croc

model : TC022
 dimensions : 7'-1" x 3'-x 2'-3"
 use zone : 19'-1" x 15'
 ages : 2-5



Bison

model : TC004
 dimensions : 7'-6" x 4'-9" x 3'-8"
 use zone : 19'-6" x 16'-9"
 ages : 2-5



Trout

model : TC013
 dimensions : 5'-1" x 3'-3" x 3'-10"
 use zone : 17'-1" x 15'-3"
 ages : 2-5



Tree Frog

model : TC003
 dimensions : 6'-x 5'-11" x 3'-3"
 use zone : 18' x 17' 11"
 ages : 2-5





Caterpillar

model : TC018
 dimensions : 23' 5" x 4' 11" x 4' 9"
 use zone : 35' 5" x 16' 11"
 ages : 2-5



Caterpillar Papilio

model : TC032
 dimensions : 9' 11" x 2' 4" x 1' 11"
 use zone : 21' 11" x 14' 4"
 ages : 2-5



Caterpillar Anise

model : TC033
 dimensions : 7' 7" x 2' 5" x 2' 10"
 use zone : 19' 7" x 14' 5"
 ages : 2-5



Beluga Whale

model : TC038
 dimensions : 6'-2" X 5'-11" X 1'-11"
 use zone : 18'-2" X 17' 11"
 ages : 2-5



Humpback Whale

model : TC023
 dimensions : 13' 9" x 7' 6" x 3' 6"
 use zone : 25' 9" x 19' 6"
 ages : 2-5



Salamander

model : TC011
 dimensions : 13' 11" x 4' 3" x 1' 8"
 use zone : 25' 11" x 16' 3"
 ages : 2-5



PLAY SCULPTURES

Operating at the intersection of art and play, we go beyond theming, with an elegant collection of sculptural climbers ranging from the larger than life to the otherworldly.

Mayan Wall

model : SC013

dimensions : 12' 3" x 7' 9" x 7' 11"

use zone : 24' 3" x 19' 9"

ages : 5-12





The Drift

model : SC012
 dimensions : 10' x 7' 7" x 7' 11"
 use zone : 22' x 19' 7"
 ages : 5-12



Mini Mobius

model : SC005
 dimensions : 7' 11" x 6' 9" x 3' 9"
 use zone : 19' 11" x 18' 9"
 ages : 2-12



Play Ball

model : SC014
 dimensions : 5'-10" X 5'-3" X 7'-6"
 use zone : 17'-10" X 17'-3"
 ages : 5-12





DIG BONES



Vertebrae

model : AP003-1
dimensions : 1' 3" x 2' 9"
ages : 2-5



Ribs

model : AP003-3
dimensions : 2' x 2' 5"
ages : 2-5



Skull

model : AP003-4
dimensions : 2' x 2' 8"
ages : 2-5



Hips + Legs

model : AP003-2
dimensions : 1' 7" x 2' 8"
ages : 2-5



T-Rex

model : SC004
dimensions : 18' 3" x 6' x 4' 6"
use zone : 30' 3" x 18'
ages : 5-12







Chipeta Water Table

model : SF003
 dimensions : 15' x 8' x 2' 2"
 use zone : 27' x 20'
 ages : 2-12



Train Tunnel

model : SC025
 dimensions : 11' 2" x 8' x 6' 2"
 use zone : 23' 2" x 20'
 ages : 5-12



Lost City Climber

model : SC035
 dimensions : 12' 4" x 6' 9" x 8'
 use zone : 24' 4" x 18' 9"
 ages : 5-12



Castle Climber

model : SC031
 dimensions : 13' 9" x 7' 6" x 7'
 use zone : 25' 9" x 19' 6"
 ages : 5-12



Lighthouse Rock

model : SC022
 dimensions : 9' x 5' x 10'
 use zone : 21' x 17'
 ages : 5-12



Third Sense

model : SC002
 dimensions : 7' 6" x 6' 9" x 7' 9"
 use zone : 19' 6" x 18' 9"
 ages : 5-12 +



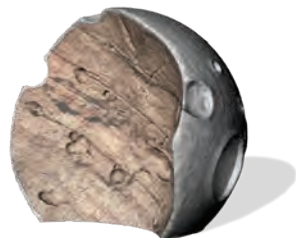
"If you trust play, you will not have to control your child's development as much. Play will raise the child in ways you can never imagine."

~ Vince Gowmon



Mitosis #1

model : SC003
dimensions : 10' 9" x 6' 7" x 8"
use zone : 22' 9" x 18' 7"
ages : 5-12 +



Half Moon

model : SC001
dimensions : 8' x 5' 11" x 6' 11"
use zone : 20' x 17' 11"
ages : 5-12 +



Saturn Climber

model : SC008
dimensions : 7' 6" x 7' 6" x 3' 6"
use zone : 19' 6" x 19' 6"
ages : 2-5



Mini Mite

model : SC027
dimensions : 4' x 2' 8" x 4'
use zone : 16' x 14' 8"
ages : 2-5





Telo Climber

model : SC029
 dimensions : 7' 10" x 4' 2" x 6'
 use zone : 19' 10" x 16' 2"
 ages : 5-12



Chroma Climber

model : SC026
 dimensions : 6' 2" x 4" x 6'
 use zone : 18' 2" x 16'
 ages : 5-12



Kinesis Climber

model : SC030
 dimensions : 7' x 4' 9" x 5' 8"
 use zone : 19' x 16' 9"
 ages : 5-12



Grass Blade Small

model : SC018
 dimensions : 6' 4" x 1' 8" x 2' 8"
 use zone : 18' 4" x 13' 8"
 ages : 2-5



Grass Blade Large

model : SC019
 dimensions : 7' 7" x 2' 3" x 4'
 use zone : 19' 7" x 14' 3"
 ages : 2-5



Grass Blade Balance

model : SC020
 dimensions : 9' 2" x 1' 4" x 1' 6"
 use zone : 21' 2" x 13' 4"
 ages : 2-5







WOODLANDS

When the hard lines and polished surfaces of contemporary play structures don't fit your vision, head to the Woodlands for a more natural aesthetic. This line of unique sculptures is inspired by nature's playground, with organic shapes and textures.



Woodland Fort

model : AP018
 dimensions : 22' 10" x 9' 2" x 8' 1"
 use zone : 37' 10" x 21' 2"
 ages : 5-12



Linkin' Log

model : AP031
 dimensions : 7' 2" x 3' x 2' 4"
 use zone : 19' 2" x 15'
 ages : 2-12



Plyo Stump

model : AP014
 dimensions : 8' 9" x 2' x 3' 1"
 use zone : 20' 9" x 14'
 ages : 2-12



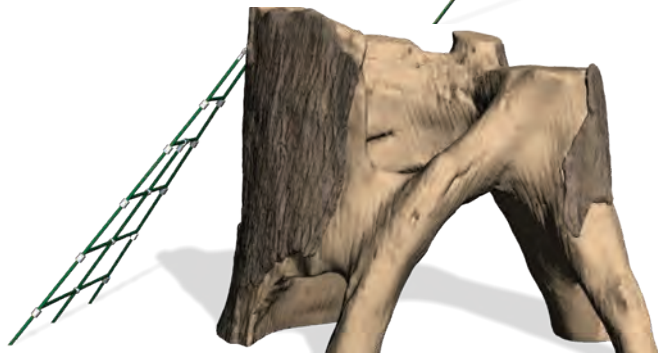
Staggered Stumps

model : AP020
 dimensions : 6' 10" x 3' 2" x 3' 1"
 use zone : 18' 10" x 15' 2"
 ages : 2-12



Timber!

model : AP011
dimensions : 21' x 8' 7" x 5'
use zone : 33' x 20' 7"
ages : 2-12



Home Tree

model : AP004
dimensions : 11' 5" x 6' 3" x 6' 4"
use zone : 23' 5" x 18' 3"
ages : 5-12

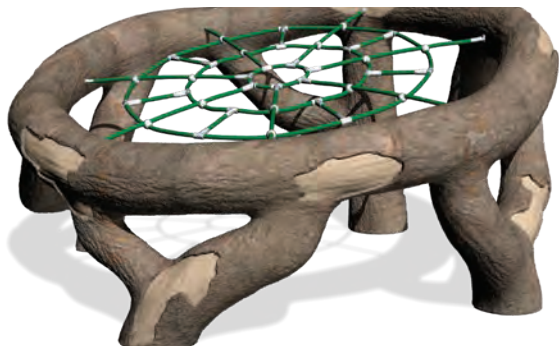


Eagle's Nest

model : AP010
dimensions : 13' x 14' 5" x 9' 7"
use zone : 25' x 26' 5"
ages : 5-12

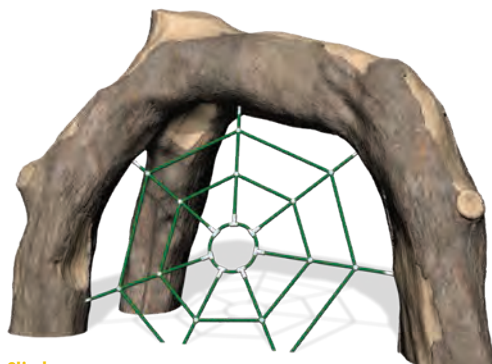






Charlotte's Web

model : AP005
dimensions : 8' x 7' 11" x 4' 7"
use zone : 20' x 19' 11"
ages : 2-12



Web Climber

model : AP001
dimensions : 10' 6" x 4' 10" x 7"
use zone : 22' 6" x 16' 10"
ages : 5-12



Log Traverse

model : AP015
dimension : 19' 8" x 6' 2" x 3' 7"
use zone : 31' 8" x 18' 2"
ages : 2-12



STEPPING FORMS



Small

model : SF002-SM
dimensions : 18" tall x 10" DIA
ages : 2-12



Medium

model : SF002-MD
dimensions : 18" tall x 18" DIA
ages : 2-12



Large

model : SF002-LG
dimensions : 18" tall x 28" DIA
ages : 2-12



SITE FURNISHINGS



Sandstone Bench

model : SF001
dimensions : 2' 1" x 5' 10" x 1' 5"



Split Log Bench

model : SF004
dimensions : 6' x 2' 2" x 1' 6"



Stump Table

model : SF005
dimensions : 6' 8" x 3' x 2' 6"

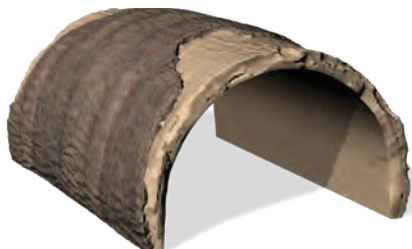


*"You cannot make people learn.
You can only provide the right conditions for
learning to happen."*

~ Vince Gowmon







Hollow Log

model : AP008
 dimensions : 6' x 4' 3" x 2' 8"
 use zone : 18' x 16' 3"
 ages : 2-5



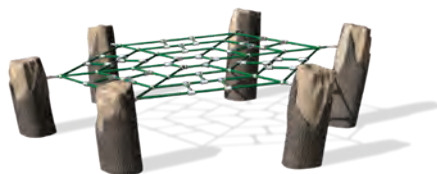
Balance Log

model : AP009
 dimensions : 12' 6" x 4' x 1' 2"
 use zone : 24' 6" x 16'
 ages : 2-5



ADA Transfer Station

model : AP030
 dimensions : 3' 11" x 3' 6" x 3' 5"
 use zone : 15' 11" x 15' 6"
 ages : 2-12



Hickory Hammock

model : AP006
 dimensions : 8' 10" x 10' 1" x 2' 10"
 use zone : 20' 10" x 22' 1"
 ages : 5-12



Log Fort

model : AP033
 dimensions : 11' 2" x 8' x 5'
 use zone : 23' 2" x 20'
 ages : 2-12





Inspiration Playground • Bellevue, WA

THE VINES



Lakewood Vine

model : AP027
dimensions : 3' 9" x 7' 11" x 2' 4"
use zone : 15' 9" x 19' 11"
ages : 2-5



Melrose Vine

model : AP026
dimensions : 3' 5" x 9' 1" x 2' 11"
use zone : 15' 5" x 21' 1"
ages : 2-5



Perry Vine

model : AP025
dimensions : 9' 4" x 4' 3" x 3' 3"
use zone : 21' 4" x 16' 3"
ages : 2-5



Sunrise Vine

model : AP024
dimensions : 8' 6" x 5' 7" x 3' 7"
use zone : 20' 6" x 17' 7"
ages : 2-5



Washington Vine

model : AP023
dimensions : 8' x 5' 4" x 2' 10"
use zone : 20' x 17' 4"
ages : 2-5



Huff Lane Vine

model : AP021
dimensions : 12' 6" x 4' 7" x 4' 2"
use zone : 24' 6" x 16' 7"
ages : 2-5







CLIMB

We believe people are their strongest and most confident when they climb. That's why ID Sculpture is committed to offering the most authentic, natural climbing experiences available.

PLAYGROUND ROCK CLIMBERS

Nobody builds boulders and kids' climbing features like ID Sculpture. Our kids' climbers are nature-inspired, offering multiple routes for every ability, from a child learning to scramble to a budding young adventurer. With our proprietary fabrication process, we can match any type of geology and provide limitless options for color, contour and finished texture.

Cairn Tower

model : CB012
dimensions : 12' 4" x 7' 11" x 10' 6"
use zone : 24' 4" x 19' 11"
ages : 5-12



Erosion Boulder

model : CB004

dimensions : 8' 7" x 12' 5" x 8'

use zone : 20' 7" x 24' 5"

ages : 5-12 + Beyond



Palisades Boulder

model : CB001

dimensions : 13' x 6' 6" x 8' 2"

use zone : 25' x 18' 6"

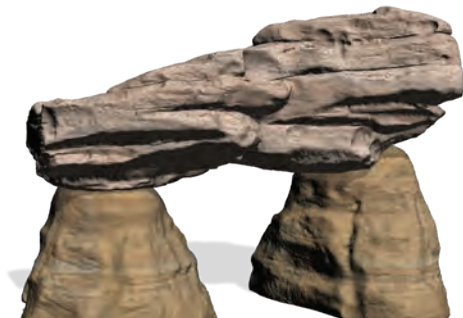
ages : 5-12 + Beyond





Sandstone Arch

model : CB005
 dimensions : 11' 8" x 6' 11" x 5' 10"
 use zone : 23' 8" x 18' 11"
 ages : 5-12



Hoodoo Arch

model : CB010
 dimensions : 7' 5" x 11' 3" x 8"
 use zone : 19' 5" x 23' 3"
 ages : 5-12 + Beyond



6 by Boulder

model : CB007
 dimensions : 6' 7" x 5' 4" x 6' 6"
 use zone : 18' 7" x 17' 4"
 ages : 5-12



Transition Boulder

model : CB008
 dimensions : 6' 1" x 4' 1" x 6' 1"
 use zone : 18' 1" x 16' 1"
 ages : 5-12





Moab Arch

model : CB017
dimensions : 16' 10" x 5' 6" x 8' 8"
use zone : 28' 10" x 17' 6"
ages : 5-12 + Beyond



Mini Arch

model : CB015
dimensions : 8' 1" x 3' 9" x 3' 3"
use zone : 20' 1" x 15' 9"
ages : 2-5



Sandstone Boulder

model : CB006
dimensions : 6' 3" x 4' 8" x 5' 8"
use zone : 18' 3" x 16' 8"
ages : 5-12



Approach Boulder

model : CB025
dimensions : 10' 6" x 5' 4" x 3' 2"
use zone : 22' 6" x 17' 4"
ages : 2-5





Cave Rock

model : CB011
dimensions : 8' 6" x 5' 4" x 5'
use zone : 20' 6" x 17' 4"
ages : 2-12



Rock Slide

model : CB019
dimensions : 18' x 5' 2" x 10' 2"
use zone : 30' x 17' 2"
ages : 5-12



Skyland Boulder Mini

model : CB021
dimensions : 4' 9" x 3' 7" x 3'
use zone : 16' 9" x 15' 7"
ages : 2-5



Skyland Boulder

model : CB023
dimensions : 7' x 4' 8" x 8'
use zone : 19' x 16' 8"
ages : 5-12 + Beyond



Pinnacle Boulder

model : CB026
dimensions : 3' x 2' 11" x 6'
use zone : 15' x 14' 11"
ages : 5-12



*"You don't have to see the whole staircase,
just take the first step."*

~ MLK jr.

Wardle Fields Regional Park • Bluff

CLIMB playground rock

PERFORMANCE BOULDERS

Make no mistake: our performance boulders aren't just super-sized versions of playground climbers. Our roots are in rock climbing and we call on that experience to match any rock type or natural formation to create boulder problems at specific grades. Every boulder features sculpted routes for beginner to advanced and professional climbers, with optional inserts for modular handholds. These are world-class boulders worthy of world-class climbers and provide unprecedented opportunity for growth and challenge.





Moab Boulder

model : PB010

dimensions : 15' x 8' 6" x 9' 11"

use zone : 26' 1" x 20' 7"

ages : 5-12 + Beyond



Pagosa Boulder

model : PB006

dimensions : 12' 3" x 7' 9" x 10'

use zone : 24' 3" x 19' 9"

ages : 5-12 + Beyond



Colossus

model : PB001
dimensions : 25' 5" X 13' 1" X 11"
use zone : 37' 5" x 25' 1"
ages : 5-12 + Beyond



Paradise Boulder

model : PB002
dimensions : 26' 2" x 15' 11" x 11'-8"
use zone : 38' 2" x 27' 11"
ages : 5-12 + Beyond





The Mighty Fin

model : PB004

dimensions : 14' 2" x 2' 10" x 9' 2"

use zone : 26' 2" x 14' 10"

ages : 5-12 + Beyond



Montana Special

model : PB005

dimensions : 14' 10" x 6' 9" x 10' 6"

use zone : 26' 10" x 18' 9"

ages : 5-12 + Beyond



Kalispell Boulder

model : PB008

dimensions : 11' 8" x 7' 8" x 10' 1"

use zone : 23' 8" x 19' 8"

ages : 5-12 + Beyond



WALLS ARE MEANT FOR CLIMBING

At ID Sculpture, we believe everyone should have the opportunity to climb and enjoy the outdoors. That's why we've teamed up with The North Face and the Trust for Public Land on their *Walls Are Meant For Climbing* campaign. The mission is to celebrate community and make the sport of climbing more accessible.



Each boulder concept is developed with local youth at design workshops. Kids and young adults are given an opportunity to learn to climb with athletes from the North Face, then draw and sculpt their "dream boulders." IDS develops their ideas into reality and helps provide each community with an authentic, place based climbing experience.





EXPLORE

When you want to step off the beaten path and a catalog of options just won't cut it, ID Sculpture is ready to help you discover something new. With far-reaching capabilities in custom design, unique materials and innovative solutions, we provide the resources to help you plot your own course.

CUSTOM DESIGN

ID Sculpture's proprietary materials and methods put custom design within reach for any project. Whether you want a particular species of TerraCitter, features that match local rock formations, or an immersive theme that ties to your community, our design team will work with you to make it a reality. No idea is too big or too small.





Speak to the heritage and culture of your region by collaborating on a custom design and help your community tell its own story.

ART + EXHIBITS

In addition to playgrounds, ID Sculpture offers a wide range of fabrication services to the public art world. From iconic gateway features to interactive sculptures, we are a trusted source for large-scale art fabrication. We work with artists and stakeholders to help them develop their vision, taking the idea from concept to installation. We also help with material testing, construction coordination, and engineering along the way to ensure the flawless execution of your project.





FEATURE ARTIST

CHRISTOPHER
OWEN NELSON



Christopher Owen Nelson thrives in the landscape of the American West where he translates natural forms balanced in realism and abstraction. Chris approached IDS with an ambitious plan to combine crystalline glass and sculpted concrete. Through a collaborative process, IDS assisted Chris in achieving his vision with a series of geode like installations.

RETAINING WALLS

At ID Sculpture, we know that every site is unique. We have pioneered the art of fusing play environments with dynamic sites. By leveraging structural elements like retaining walls and buildings, we turn infrastructure into opportunity. Let us help you explore the options for your site to create an immersive play experience.

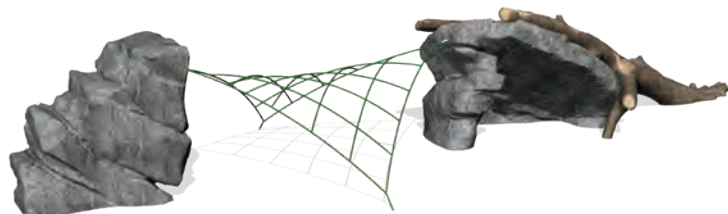




COMBINATIONS

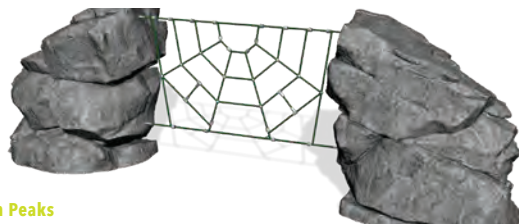
When it comes to linked play, ID Sculpture offers you the components and flexibility you need to create custom configurations. We offer rope net climbers and connections on every piece of equipment, and a few basic combinations to get you started designing your own.





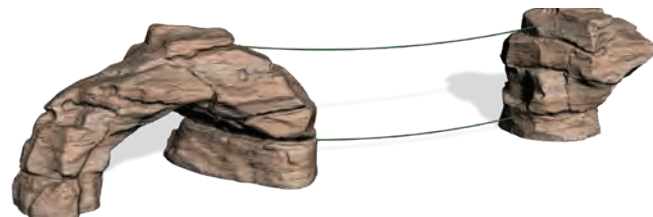
Mini Canyon Traverse

model : CMB012
 dimensions : 31' 4" x 11' x 5'
 use zone : 43' 4" x 23'
 ages : 2-5



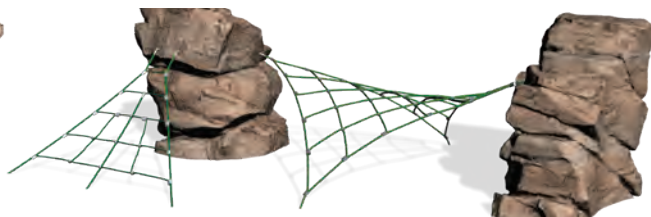
Spanish Peaks

model : CMB008
 dimensions : 20' 2" x 5' 4" x 6' 6"
 use zone : 32' 2" x 17' 4"
 ages : 5-12



Kenosha Pass

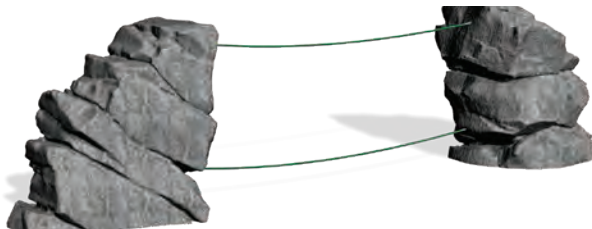
model : CMB002
 dimensions : 27' 1" x 6' 8" x 5' 10"
 use zone : 39' 1" x 18' 8"
 ages : 5-12



Maroon Bells

model : CMB007
 dimensions : 20' 1" x 13' 7" x 6' 6"
 use zone : 32' 1" x 25' 7"
 ages : 5-12





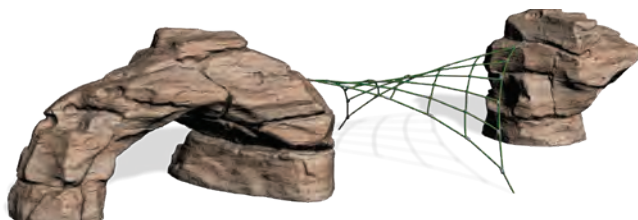
Independence Pass

model : CMB006

dimensions : 24' 2" x 5' 1" 6' 6"

use zone : 36' 2" x 17' 1"

ages : 5-12



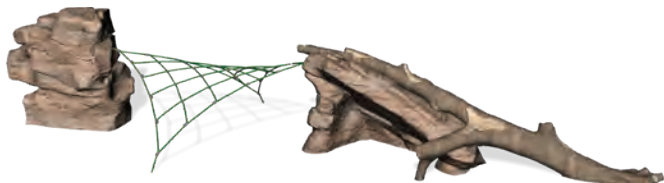
Mesa Verde

model : CMB003

dimensions : 26' 8" x 11' 9" x 5' 10"

use zone : 38' 8" x 23' 9"

ages : 5-12



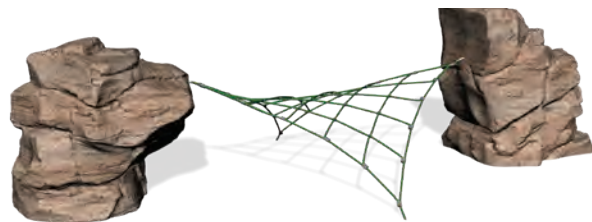
Ragged Wilderness

model : CMB005

dimensions : 32' x 11' 6" x 5' 8"

use zone : 44' x 23' 6"

ages : 5-12



West Elk Traverse

model : CMB009

dimensions : 22' 1" x 11' x 6' 1"

use zone : 34' 7" x 23'

ages : 5-12





LAND FORMING

Ever wish you could shape your landscape? Our proprietary process allows you to create accurate, 3-dimensional shapes like berms and mounds that seamlessly integrate into your play area and are suitable for turf or poured in place surfacing systems.





TECHNICAL SPECS



COMPOSITION

ID Sculpture uses a high performance composite technology to construct our products. Our typical structures use a digitally fabricated armature encapsulated with a specially formulated shell of glass fiber reinforced concrete (GFRC). The GFRC structural shell is hand sculpted and finished. The result is a product that's lightweight yet durable, rich in textural detail, and architecturally accurate so you can plan your project down to the smallest detail. We can even design our products to interface with existing site features, such as retaining walls or landscape features.





SAFETY

Safety is at the heart of all we do. Compliance with nationally recognized standards provides a safer environment for children and the general public.

All of our playground features conform to ASTM F1487, the "Standard Consumer Safety Performance Specification for Playground Equipment for Public Use" as well as the US Consumer Product Safety Commission (CPSC) Guidelines. ID Sculpture has Certified Playground Safety Inspectors (CPSI) in house to ensure that designs are safe and compliant. We proudly offer a range of products certified by the International Play Equipment Manufacturers Association, Inc. (IPEMA).

While we're proud of our commitment to safety, it goes beyond regulations. We draw on our decades of experience as parents, climbers, and adventurers to design, build, and test our products. We understand the risks inherent in outdoor play and climbing, and look for



In the interest of playground safety, the International Play Equipment Manufacturers Association (IPEMA) provides a Third Party Certification Service whereby a designated independent laboratory, TÜV SÜD America Inc., (TÜV), validates an equipment manufacturer's certification of conformance to ASTM F1487, Standard Consumer Safety Performance Specification for Playground Equipment for Public Use, except sections 7.1.1, 10 and 12.6.1. The use of the corresponding logo in ID Sculpture's catalog signifies that ID Sculpture has received written validation from the independent laboratory that the product(s) associated with the use of the logo conforms to the requirements of the indicated standard. Check the IPEMA website (www.ipema.org) to confirm product validation.



DURABILITY + WARRANTY

While most conventional playground equipment is replaced, on average, every ten years; ID Sculpture believes in a higher bar. The life expectancy of our outdoor sculptural concrete products is estimated to be 50 years.

That's because everything we build is made to last. Our proprietary concrete was developed through years of experience in the harshest of climates - from the bitter cold of our home in Gunnison, Colorado to the blazing heat of Mesa, Arizona. ID Sculpture's proprietary concrete mix is the toughest in the industry and is designed for easy maintenance and repair. All ID Sculpture products are warrantied for 10 years.





INSTALLATION

All of our projects are designed and fabricated with installation in mind. We understand the realities of construction sites and have learned how to properly execute even the most demanding of installations. Whether your site is a clean retail space or a public plaza, ID Sculpture has the experience to do it right every time.

If you prefer, you can install yourself. Sculptures come with either an integral footing or are designed for a simple, site built slab on grade. Your sculpture will come with everything you need to install it, including mechanical connection points, hardware, an easy to understand installation guide, and an Operations and Maintenance manual.





ID SCULPTURE

PLAY. CLIMB. EXPLORE.

idsculpture.com | 970.641.1747



This catalog printed on paper containing 30% post-consumer waste.